

FAQs for Surgical Mask Covers

Surgical mask covers, or pocket masks, allow a surgical mask to be inserted into the top. The protection provided by the cover allows the surgical mask to be reused.

Please adhere to the guidelines below. These specifications are critical because they ensure that the masks are effective in protecting our staff from COVID-19.

+ Do I need to use specific fabric?

Yes! **Please only use the fabric furnished by Middlesex Health.** This will help us distinguish these mask covers from other homemade masks.

To arrange to pick up fabric, please call Community Relations at 860-358-6200 or email info@midhosp.org.

+ Do I need to follow a specific sewing pattern?

We have provided this step-by-step photo guide for you to follow. However, feel free to use your judgement and expertise while assembling the mask covers. The only requirements are to use issued fabric and the finished dimensions.

+ Do I need to pre-wash the fabric?

Yes, please pre-wash the fabric you are using in WARM/HOT water. This ensures that the mask will not shrink when rewashed later.

+ Do I need to use the same fabric for the ties?

You can use the same green fabric for the ties, or you can use fabric ribbon that you have on hand. Please follow the instructions in Steps 2 and 3 to ensure that the ties are the proper size and length.

+ How should the masks be packaged for delivery?

Please place your completed masks in a sealable plastic bag (i.e., Ziploc). All masks can be together in one bag.

+ How do I arrange delivery?

In order to arrange for delivery of your masks, please call Community Relations at 860-358-6200 or email info@midhosp.org.



Guidelines for Sewing Mask Covers

Special Note

Please be sure to review all steps before beginning. Steps 9 - 10, creating the pocket for the long tie (see Step 2), are crucial to efficacy of the masks.

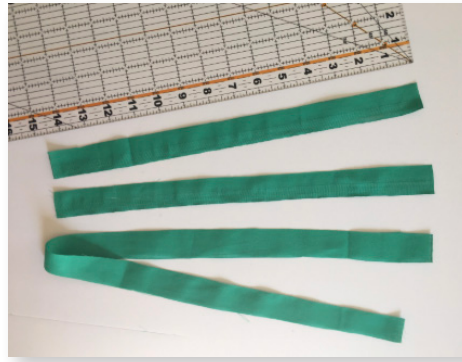
Step 1

Cut one piece of green fabric 10 ½" wide x 12 ½" tall. Final size will be 10" x 6".



Step 2

Cut the ties. Cut **(1)** 36" x ½" strip of green fabric or ribbon and **(2)** 14" x ½" strips of green fabric or ribbon.



Step 3

Fold each tie piece in half lengthwise and stitch to form a reinforced tie. Don't worry about raw edges—use your discretion. The photo shows tie turned inside out, with no raw edge showing.



Step 4

Fold over $\frac{1}{4}$ " of fabric on all four sides.



Steps 5 - 6 - 7

Place the two top ties at the edge on both right and left sides and pin. Photo shows ribbon used for ties. Sew the top seam with the two ties in place. Sew the $\frac{1}{4}$ " bottom seam.



Steps 8 - 9

Take the bottom edge and fold in half to meet at the top edge. Mask cover will now be 10" wide x 6" tall. Pin and sew both sides leaving $\frac{1}{2}$ " from the bottom fold open.



Step 10

Through the mask's open top, insert the 36" tie through the $\frac{1}{2}$ " opening at the fold. Tie small knots at the end of the tie piece. This should complete the making of our mask cover!



Finished Product



Thank you for your generosity—we are overwhelmed with gratitude for the support from our community!